

Seasonality of Crop Prices!

What's Seasonality In?

-Futures

-Basis

-Cash Prices



What's the Marketing Year?

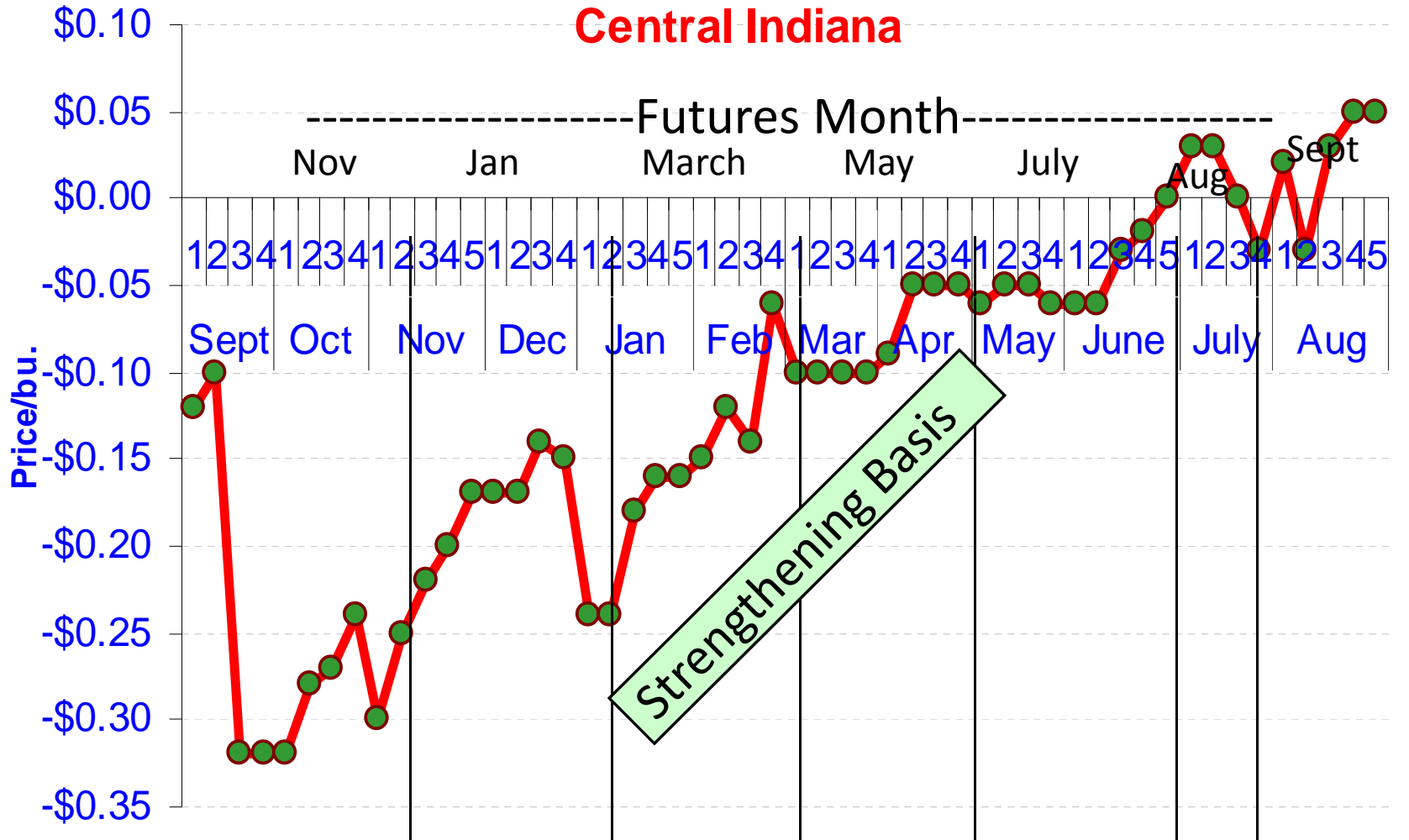
Accounting period for a Marketing Year:

1. Corn is September 1- August 30
2. Soybeans is Sept.1 – August 30
3. Wheat is June 1 to May 31

Question: What is the 06/07 Marketing Year for Corn and Soybeans??

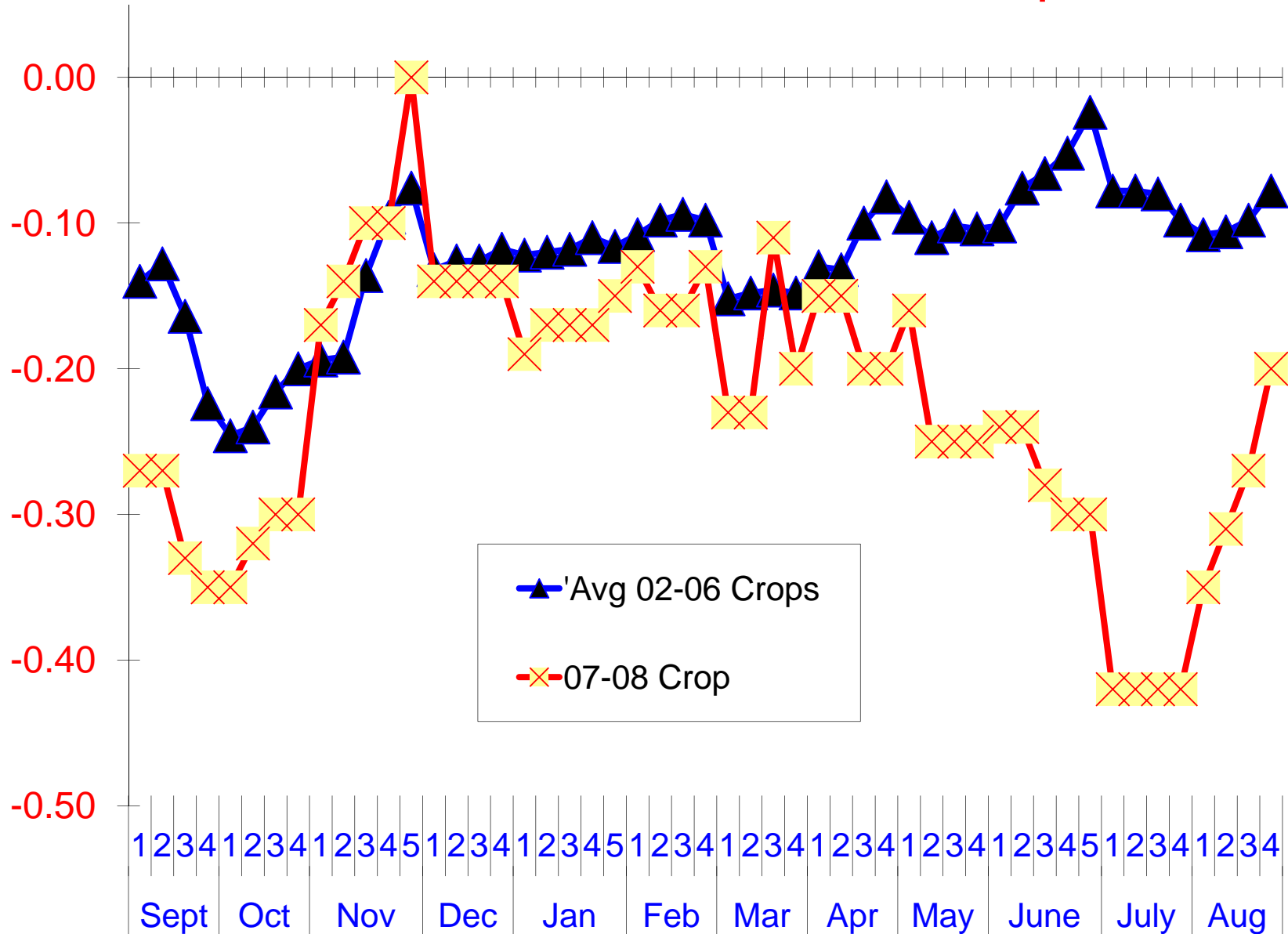
Constructing Nearby Basis Charts

Soybean Example: Nearby Basis: Central Indiana

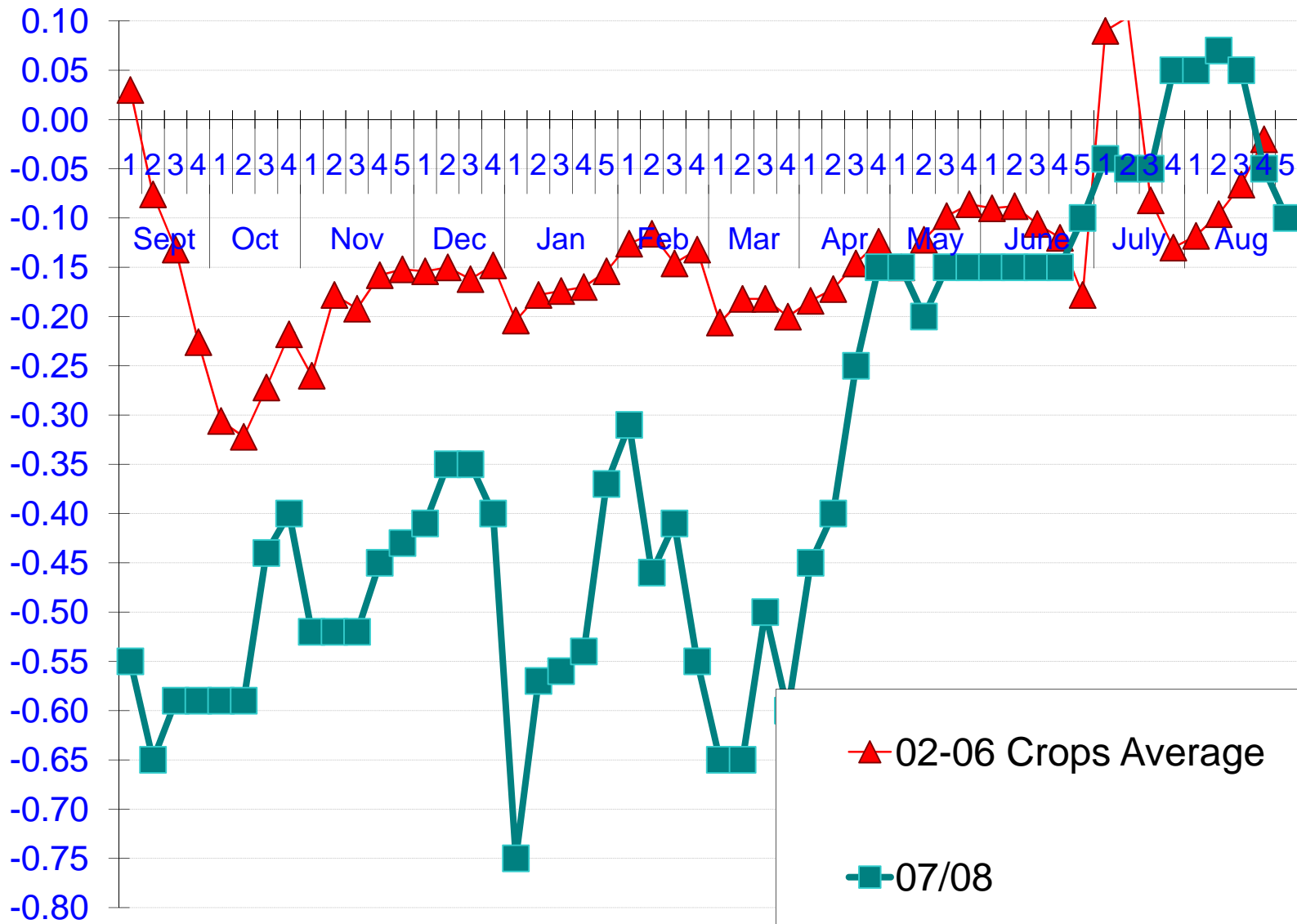


Basis Seasonality!

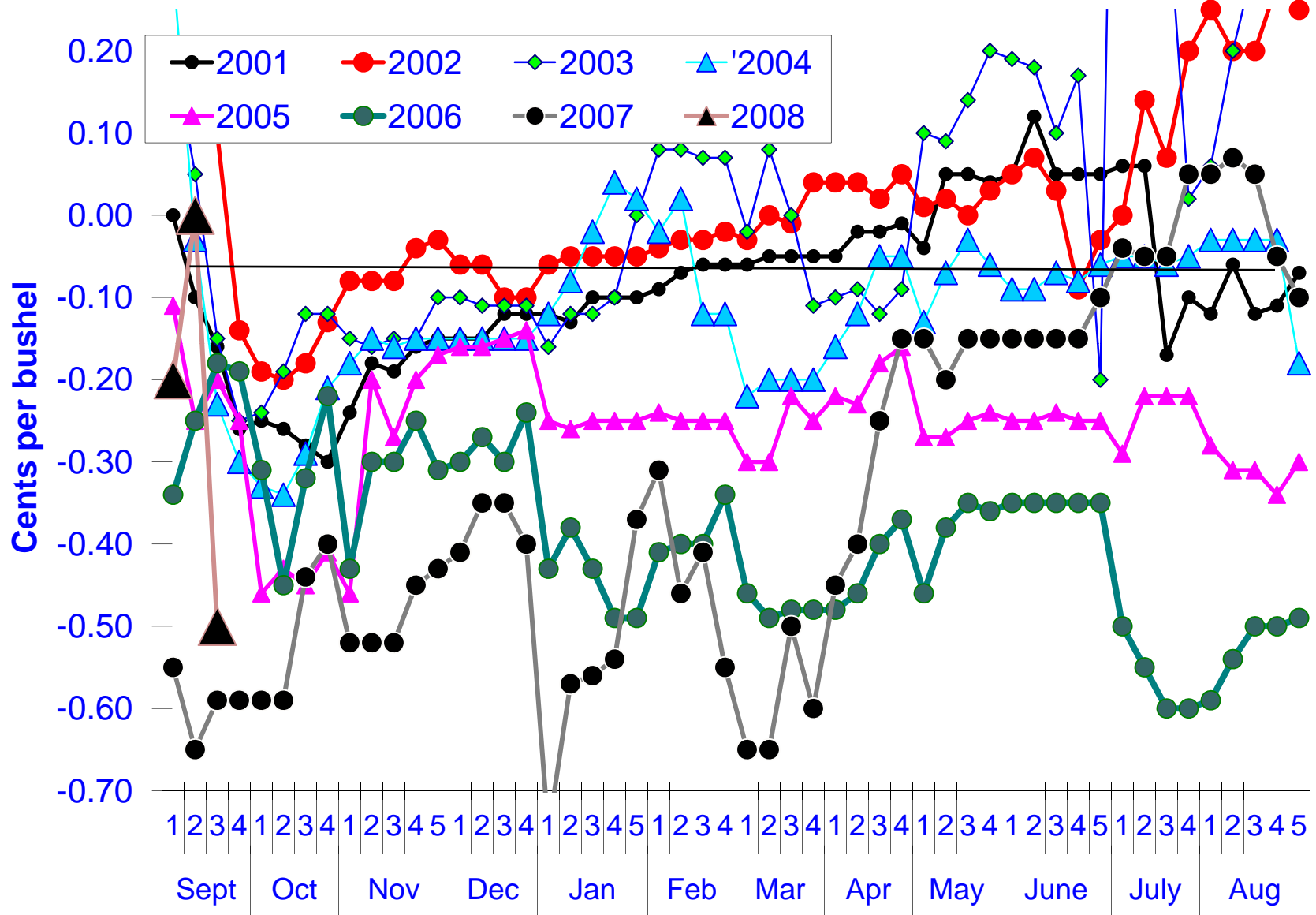
Central Indiana Corn Basis: Crops 02-06



Central Indiana Cash Bean Basis

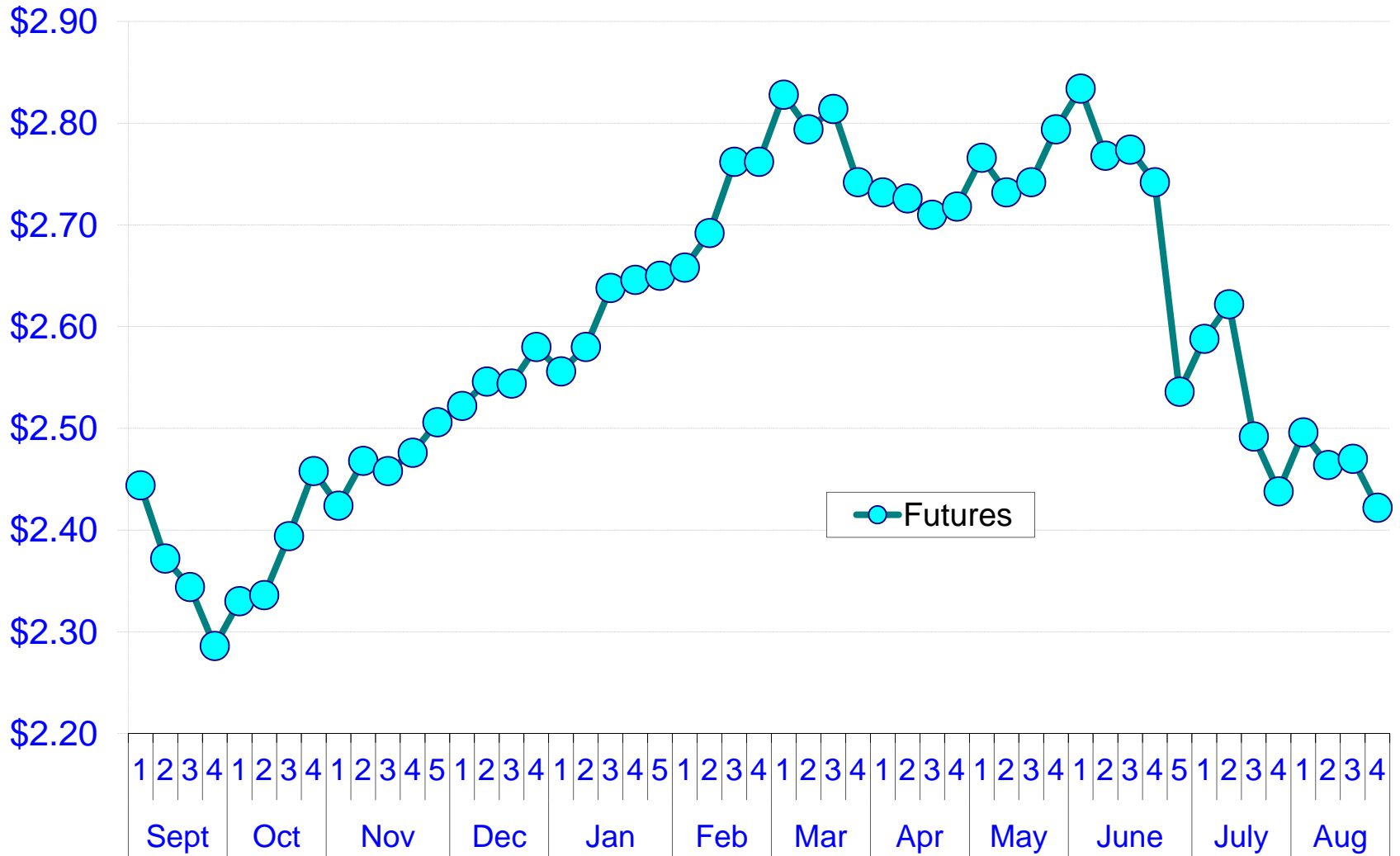


Central Indiana Bean Basis: 2001-2006

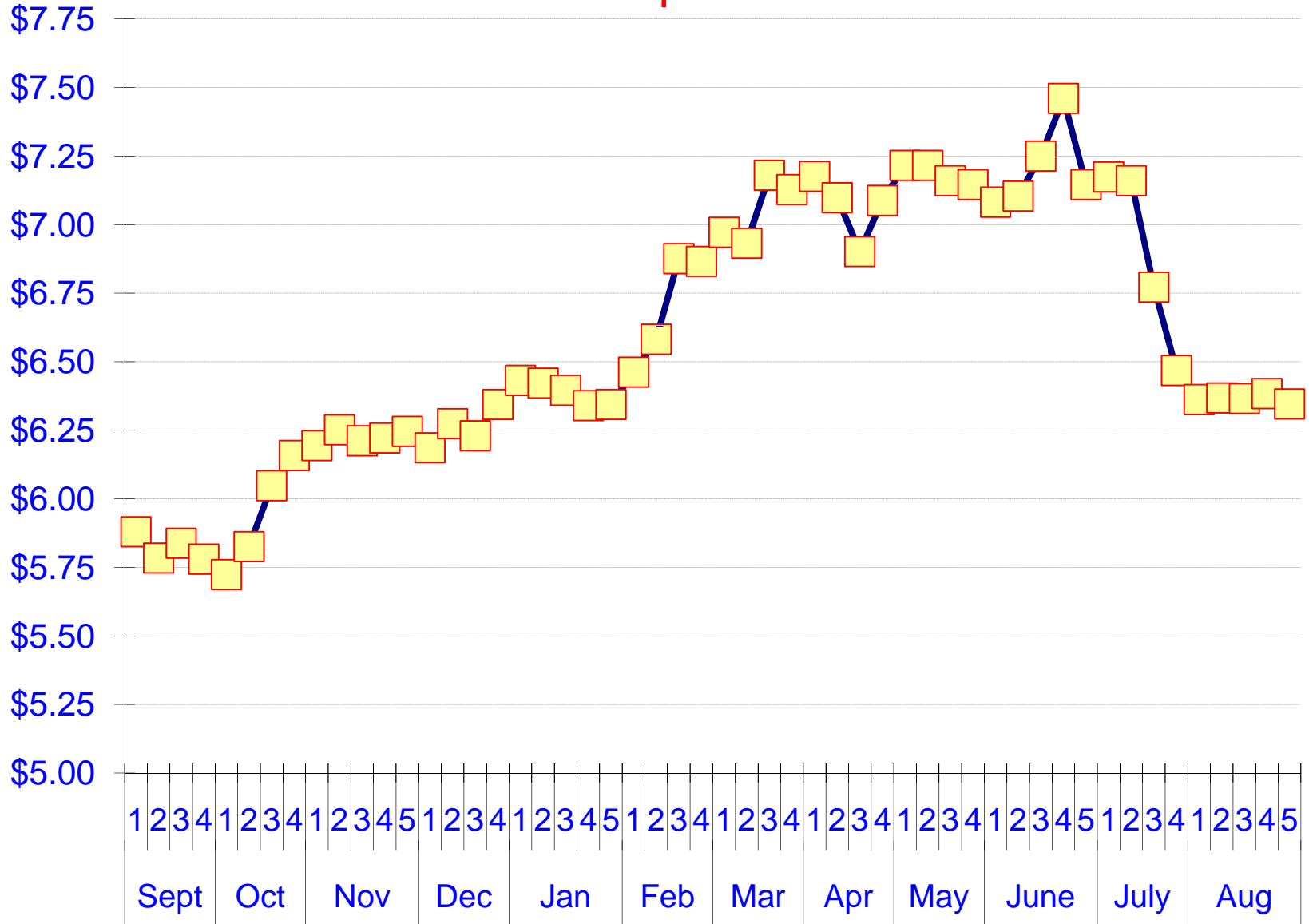


Futures Seasonality!

Average Futures Corn Central Indiana: 2002-06Crops

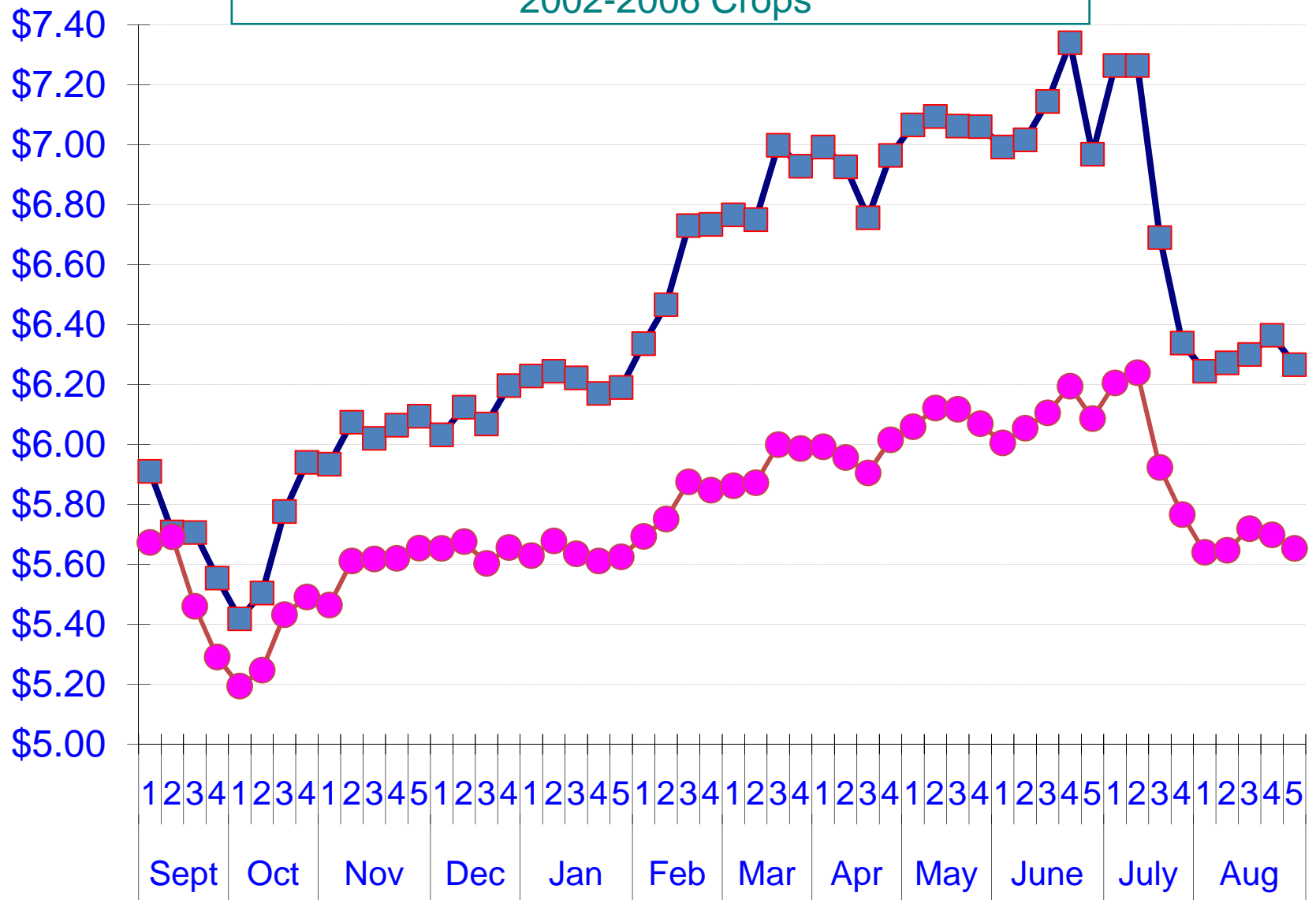


Nearby soybean Futures Price: 2002-2006 Crops

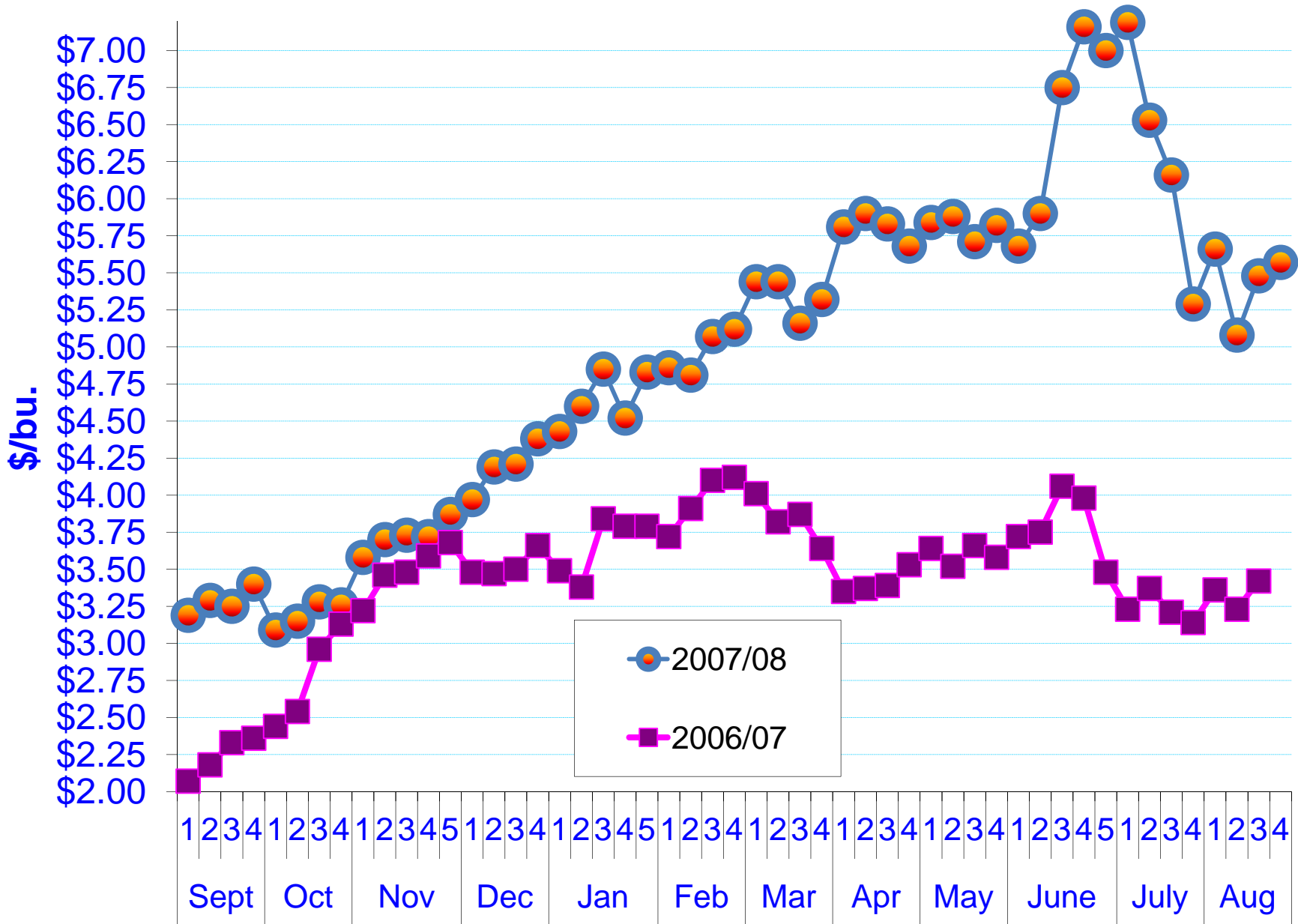


Cash Price Seasonality!

5 & 10 Year Avg. Central Indiana Cash Soybeans:
2002-2006 Crops



Central Indiana Cash Corn Prices 2006/07 and 2007/08



Central Indiana Cash Bean Prices 2006/07 and 2007/08

